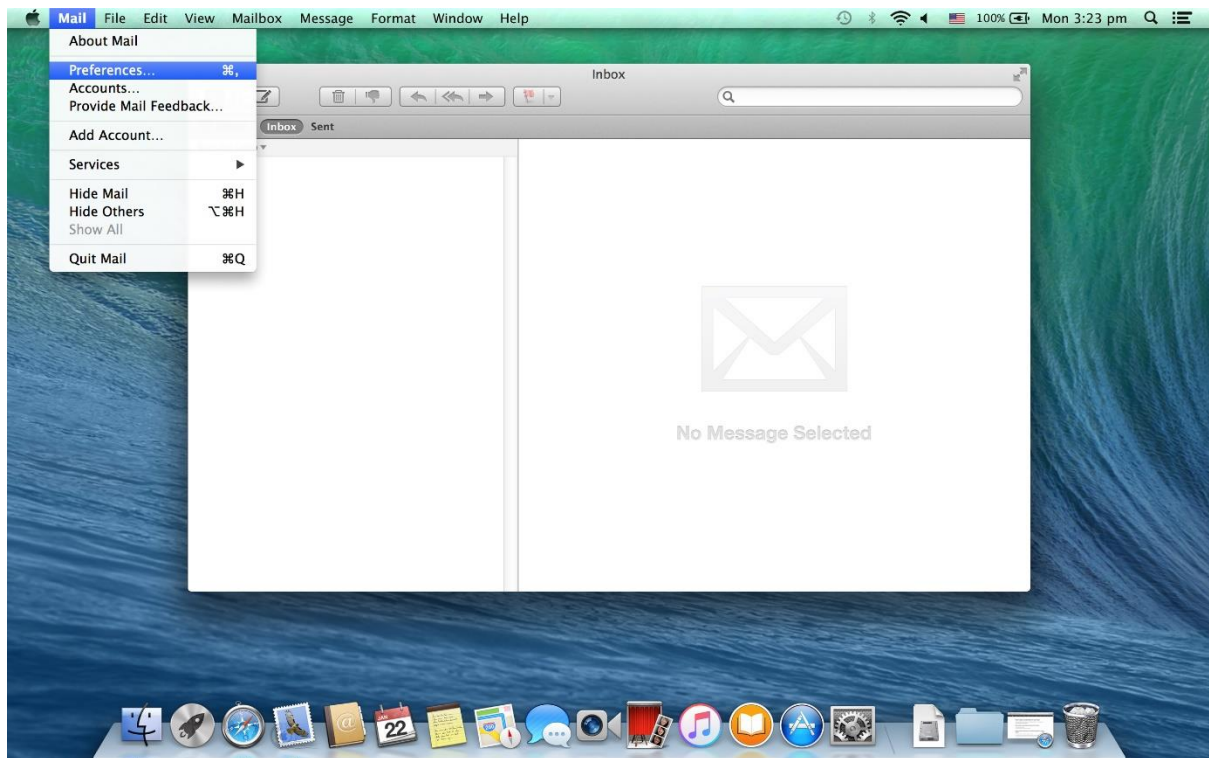


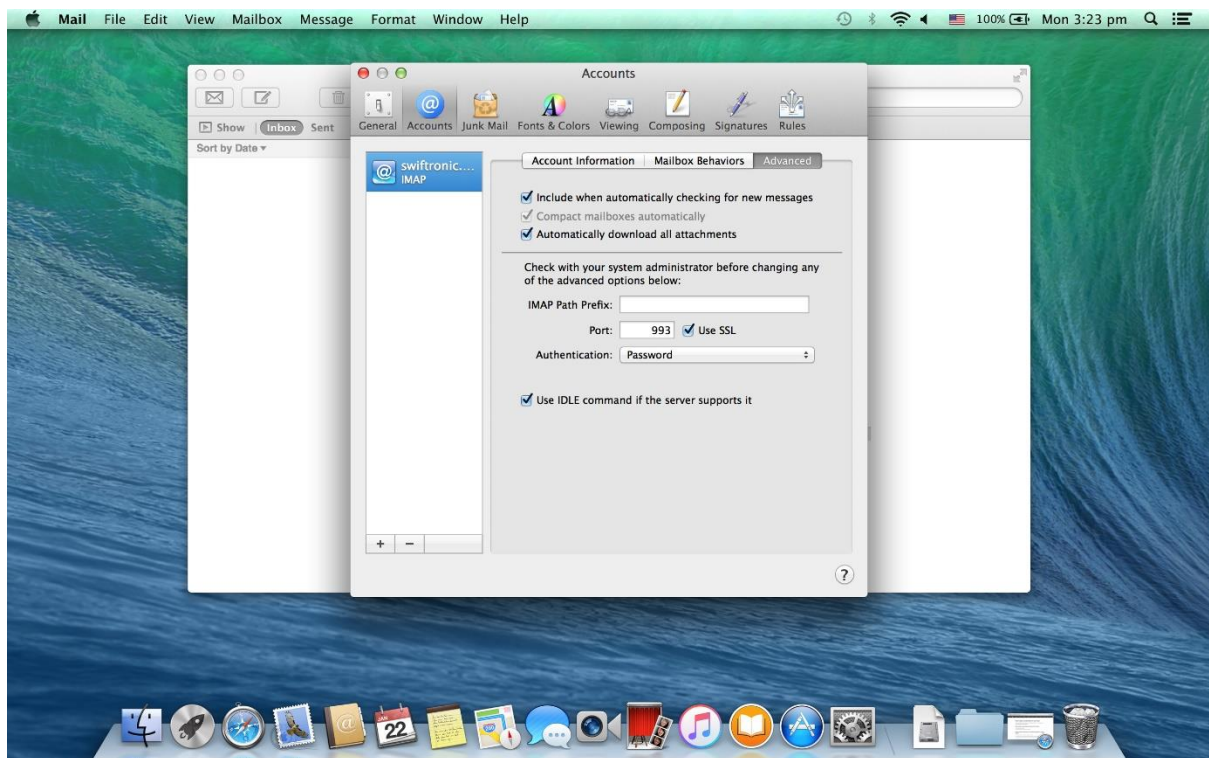
# How to enable SSL on email

Document by Dylan, 22 Jan 2018

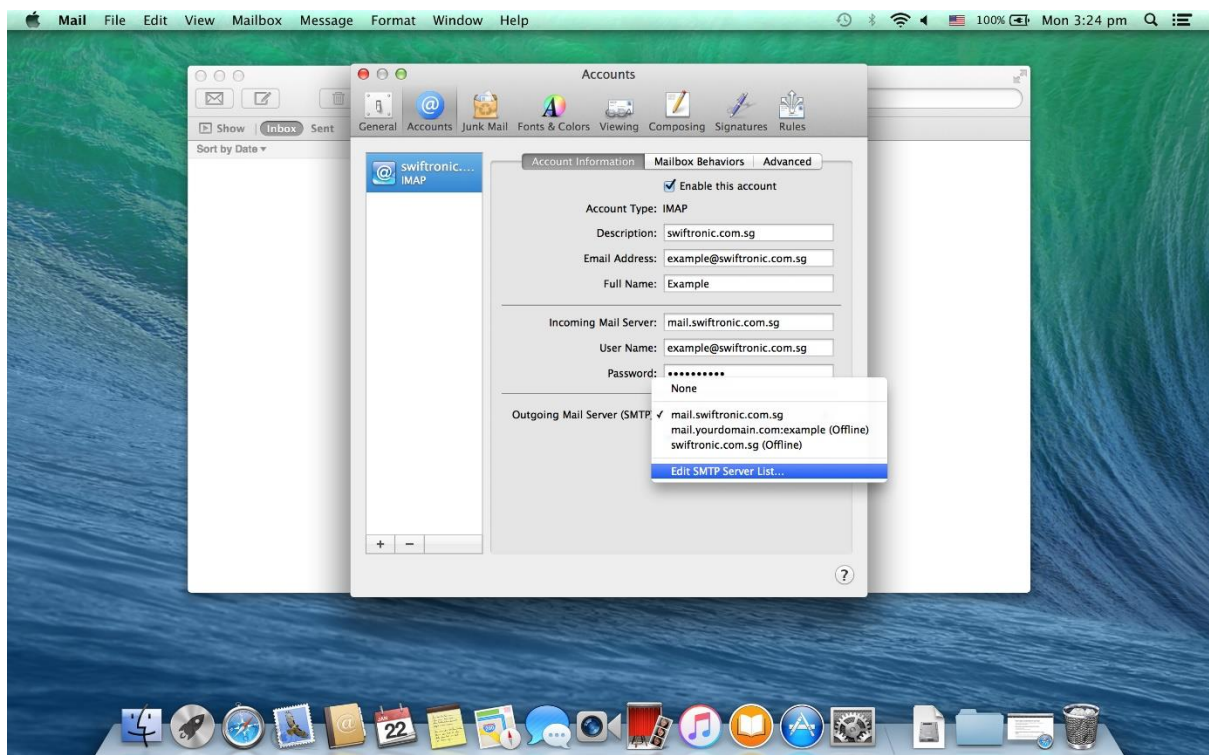
1. To enable the SSL setting on your Mac Mail. Open your Mac mail first, then click on the top left bar that indicates “**Mail**”. Select preferences.



2. After you select preferences, click Advanced. On the Advanced setting, you can see there is a port number. Beside the port number there is a SSL. Tick the SSL.



3. Once you finish on change the Advanced setting, go to account information. Go to Outgoing mail server(SMTP). Select the bar then choose "Edit SMTP server list"



4. Once you click **Edit SMTP server list**, click the Advanced bar then over there select the port to Default port (25,465,587) then tick the SSL. Click OK to save the changes. Your email will be set with SSL.

